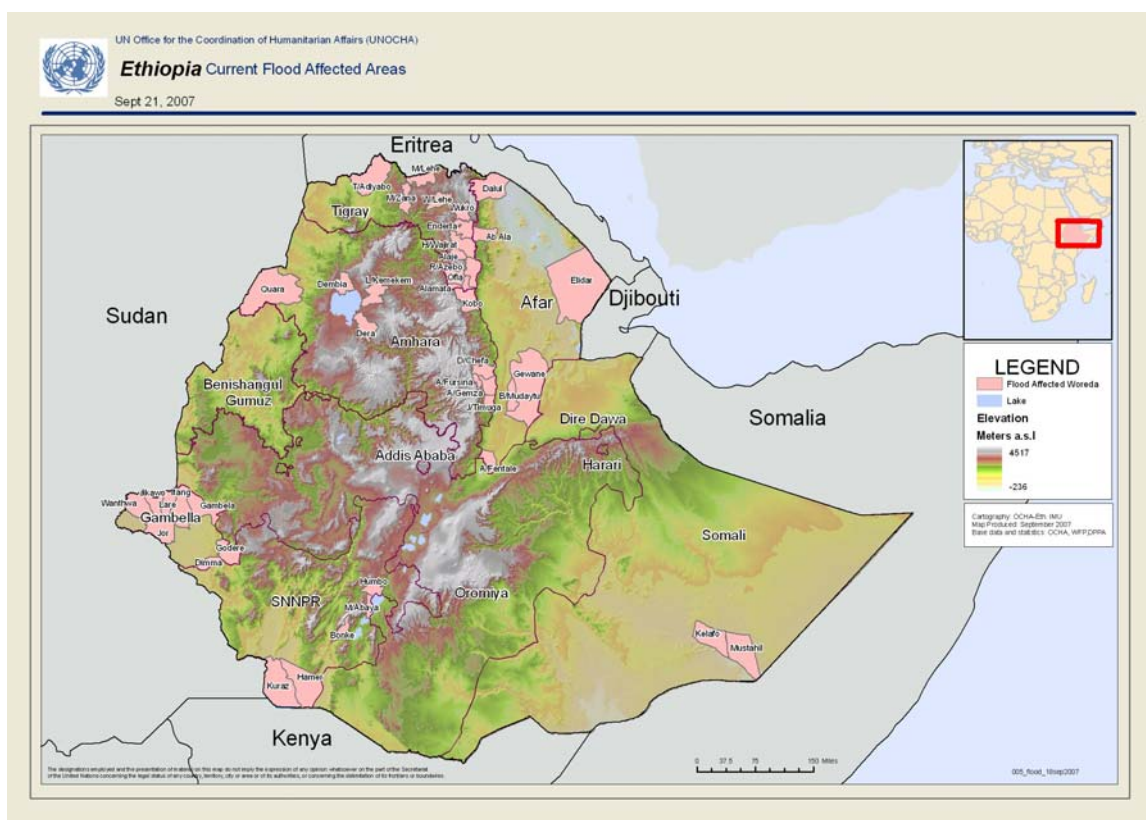




SITUATION UPDATE: FLOODING IN ETHIOPIA¹ – 21 September 07

New flooding has been reported from parts of Somali, Gambella and SNNP regions during the last two weeks. In Somali Region, the Wabishebelle River overflowed flooding 24 kebeles in Mustahil and Kelafo woredas of Gode zone, following heavy rainfall in the highlands of eastern Oromiya Region. Local authorities reported that approximately 37,000 people are affected, of which 6,000 are reportedly displaced in four kebeles of Budul, Jagi, Fagug, and Iman Ise in Mustahil woreda. Displacement has not been observed in Kelafo. Grazing land, water sources and approximately 5,630 hectares of crop land was also reportedly destroyed by flood waters, further exacerbating the already fragile food security situation in the region. Roads have also become inaccessible. In addition, increased incidences of malaria and water borne diseases, including Acute Watery Diarrhoea (AWD) are anticipated. In Gambella Region, parts of Gambella town and the capital of Lare woreda have recently been flooded for the second time. Meanwhile, in SNNPR, floods have been reported from five additional woredas - Shashego, Aleta Wondo, Decha, Gaze Gofa and Kindo Dadiye. The impact has been serious in Shashego woreda.

Since the beginning of the rainy season, flooding has affected² approximately 226,000 people³, of which 70,860 are displaced in Amhara, Gambella, Afar, SNNP, Tigray and Somali regions. An estimated 45,000 hectares of crop land have also been damaged. The threat of nationwide flooding continues with increased risk to areas near the Koka Dam as well as middle and lower Awash River.



¹ The information in this document is consolidated from reports and field information from a variety of sources including UN agencies, NGOs and government partners.

² There is no agreed definition of 'affected' population but for ease of understanding, people who have been directly (displaced) and indirectly (denied normal access to their livelihood, market and movement) are classified as 'affected' population.

³ Affected population figure is compiled from regional and woreda reports and need further verification.

NATIONAL AND INTERNATIONAL RESPONSE

1. To date, DPPA has allocated 1,800 tonnes of emergency food to more than 83,000 beneficiaries across the country excluding Somali Region. In Somali Region, DPPA plans to pre-position 700 tonnes to Gode zone.
2. DPPA has deployed staff to alert communities at risk around the Koka dam and middle and lower Awash River basins.
3. The Humanitarian Response Fund is currently reviewing proposals for flood response in Afar and Amhara regions.
4. CARE, OXFAM, UNICEF, ICRC and Ethiopia Red Cross are responding to emergency requirements in Afar.

GAPS IN THE RESPONSE

5. Flood affected areas in Somali Region are in urgent need of emergency food, medical supplies including drugs and clean drinking water. Moreover, NFIs particularly shelter is needed for the displaced population in Mustahil woreda.

Fidele Sarassoro Humanitarian Coordinator	fidele.sarassoro@undp.org Tel.251-11-5444483
Paul Hebert OCHA's Head of Office and Deputy to the Humanitarian Coordinator	hebert@un.org Tel.251-911-216233
Gregory Beals Senior Information Officer	beals@un.org Tel. 251-911-252344